

**E STUDIO**



**TECHNICAL RIDER  
2024**

**TECHNICAL DIRECTOR  
Stéphane Gauthier  
514 288-1424 ext. 3303  
[stephane.gauthier@equipespectra.ca](mailto:stephane.gauthier@equipespectra.ca)**

**Maison du Festival Rio Tinto  
305 Saint-Catherine St W,  
Montreal (Quebec) H2X 2A3**

## MAP AND DIRECTIONS

Artist and Main entrance: 305, Sainte-Catherine West, Montréal, H2X 2A3

Venue GPS Point: Latitude : 45.5065323 / Longitude : -73.5667349

# STUDIO TD | PARKING



L'ASTRAL FRONT DOOR ADDRESS : 305 Rue Sainte-Catherine O, Montréal, QC H2X 2A3  
LOAD IN / OUT 1 : GARAGE DOOR NEXT TO 1435 Rue de Bleury, Montréal, QC H3A 2H7  
LOAD IN / OUT 2 : 45°30'25.0"N 73°34'00.7"W  
PARKING 1 : 45' (INDOOR) AVAILABLE. FITS A BUS WITHOUT A TRAILER. NO GENERATOR  
PARKING 2 : STREET PARKING ALONG THE VENUE. OK TO RUN GENERATOR

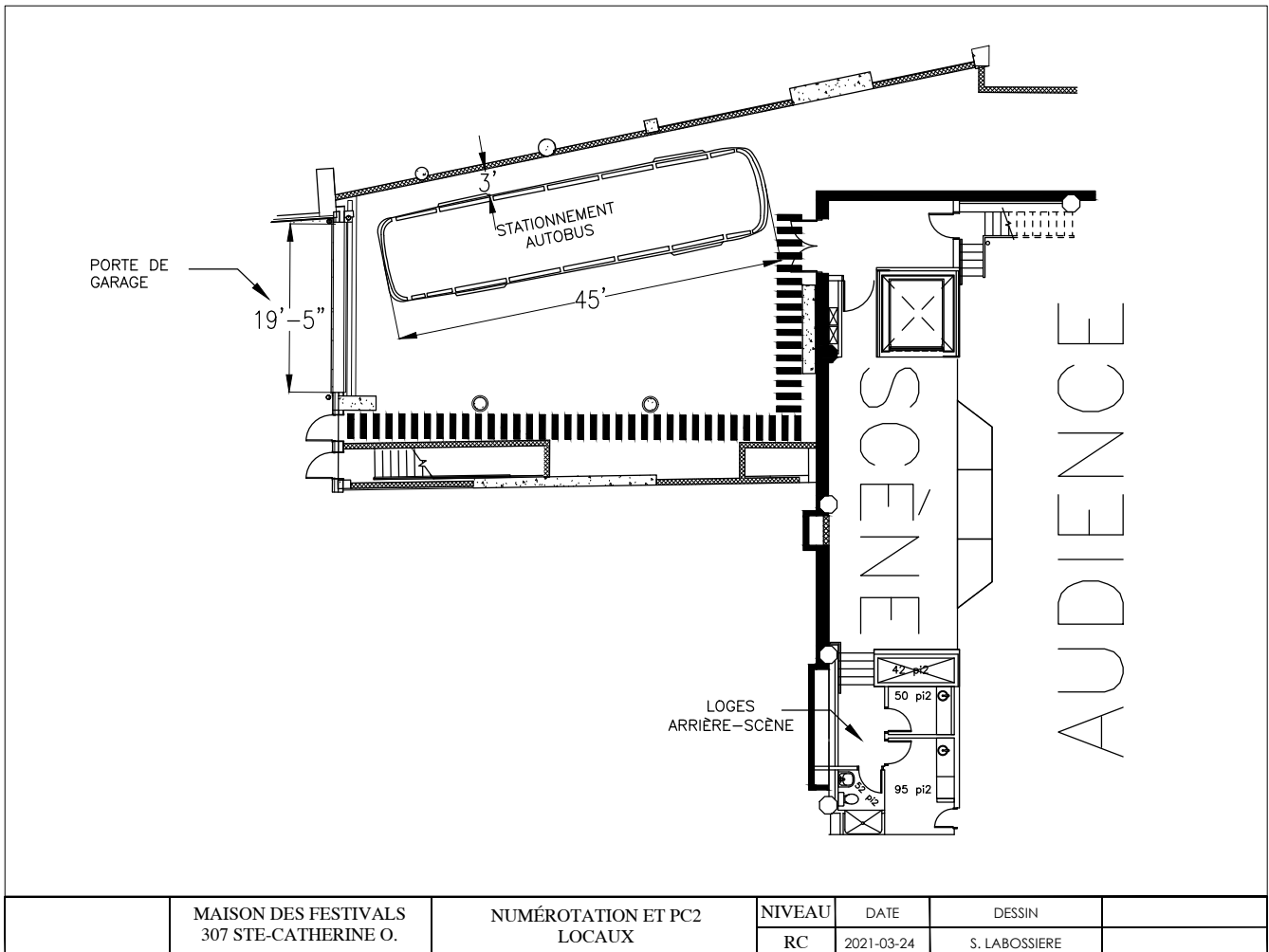
## LOADING DOCK

Access behind the building from Balmoral or Bleury street  
 Please note that there is no parking space available behind the venue

<b>Motorized door</b>	Width:	19' (5.8 M)
	Height:	12' (4 M)
<b>Garage size</b>	Length:	45' (12 M)
<b>Door</b>	Width:	5'6 (1.7M)
	Height:	7'3 (2.2M)

A freight elevator gives access to stage, loading dock and 1 level below

<b>Elevator</b>	Width:	6' (1.8M)
	Height:	7' (2.1M)
	Maximum capacity:	4000 Lbs. (1814 KG)



MAISON DES FESTIVALS 307 STE-CATHERINE O.	NUMÉROTATION ET PC2 LOCAUX	NIVEAU	DATE	DESSIN	
		RC	2021-03-24	S. LABOSSIERE	



## HOUSE

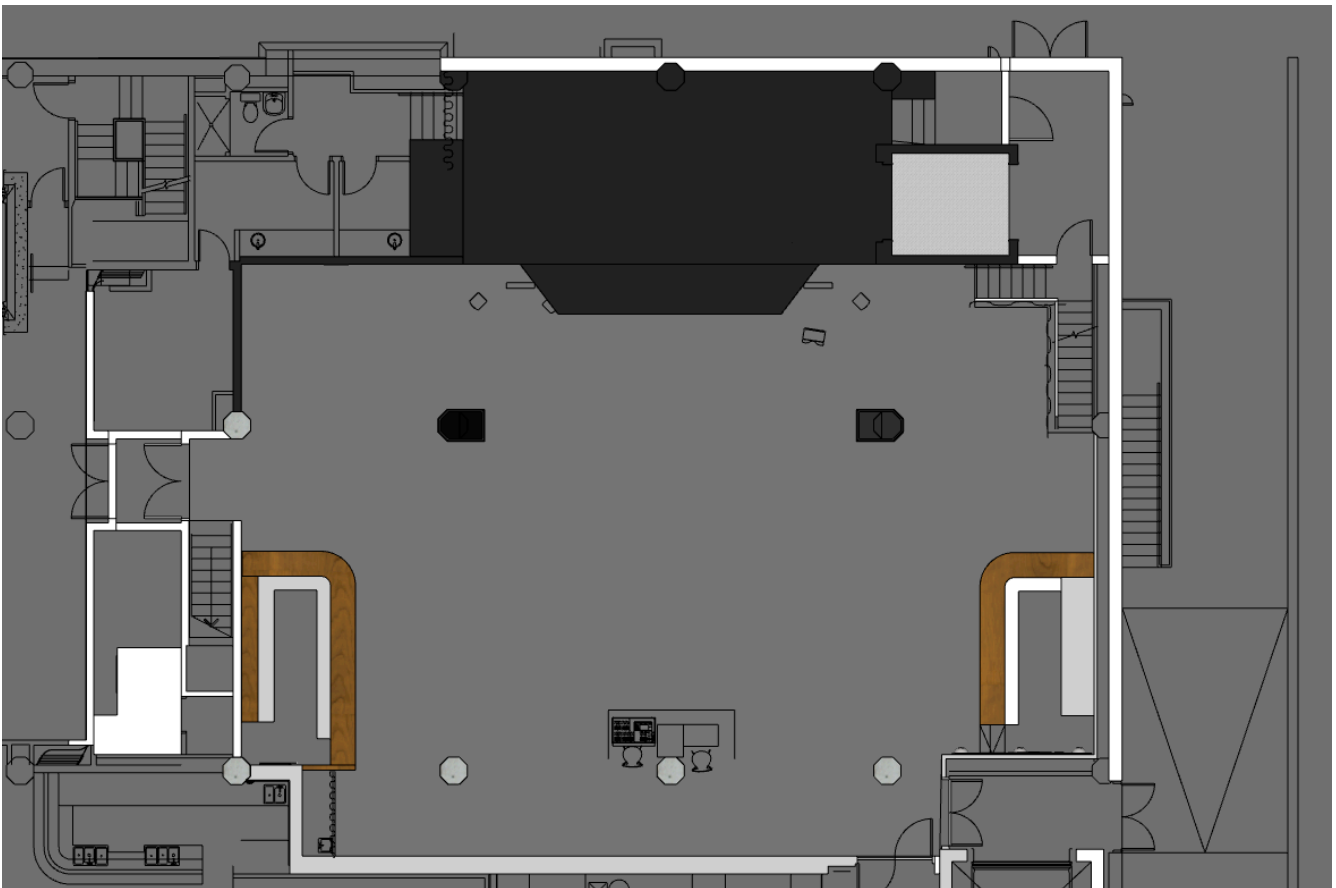
### Capacity:

Seating: 300 People  
Standing: 700 People

### Dimensions:

From house curtain to last row: 41' .9" (12.7M)  
From house to ceiling: 18' 3" (5.5M)  
From balcony to ceiling: 7' 8" (2.4M)  
Public area: 52' Width x 43' Depth

**Capacity of PA :** 105 dbA @ FOH





## STAGE

### Linoleum

Height (underneath the fly bars)	13'7" (3.9M)
Width	33'8" (10.3M)
Total depth (with extension)	19'5" (5.9M)

Stage extension is there by default

Stage Height	30" (0.8 M)
--------------	-------------

## STAGE MASKING

Curtains (black velvet)	1 x Backdrop ( <i>traveller</i> ) 1 x Border (1' 6"/4.49M x 33'.8"/10.3M) 4 x Pairs of side curtains (4'/1.22M x 13'7"/4.2M)
-------------------------	--

## ELECTRICITY

Camlok™:	1 x 120/208V 60Hz,3 phases,100A MALTI™ (stage left) 2 x 120/208V 60Hz,3 phases,200A MALTI™ (stage left)
----------	--

## RIGGING

STAGE:	6 x Fixed double pipes, capacity of 90 lbs LFT
HOUSE:	2 x Fixed double pipes, capacity of 90 lbs LFT 1 x Lateral pipe, stage left column 1 x Lateral pipe, stage right column
HOUSE:	2 x Fixed single pipes (A - B), capacity of 80 lbs LFT 1 x Fixed single pipe (C), capacity of 70 lbs LFT

## DRESSING ROOMS

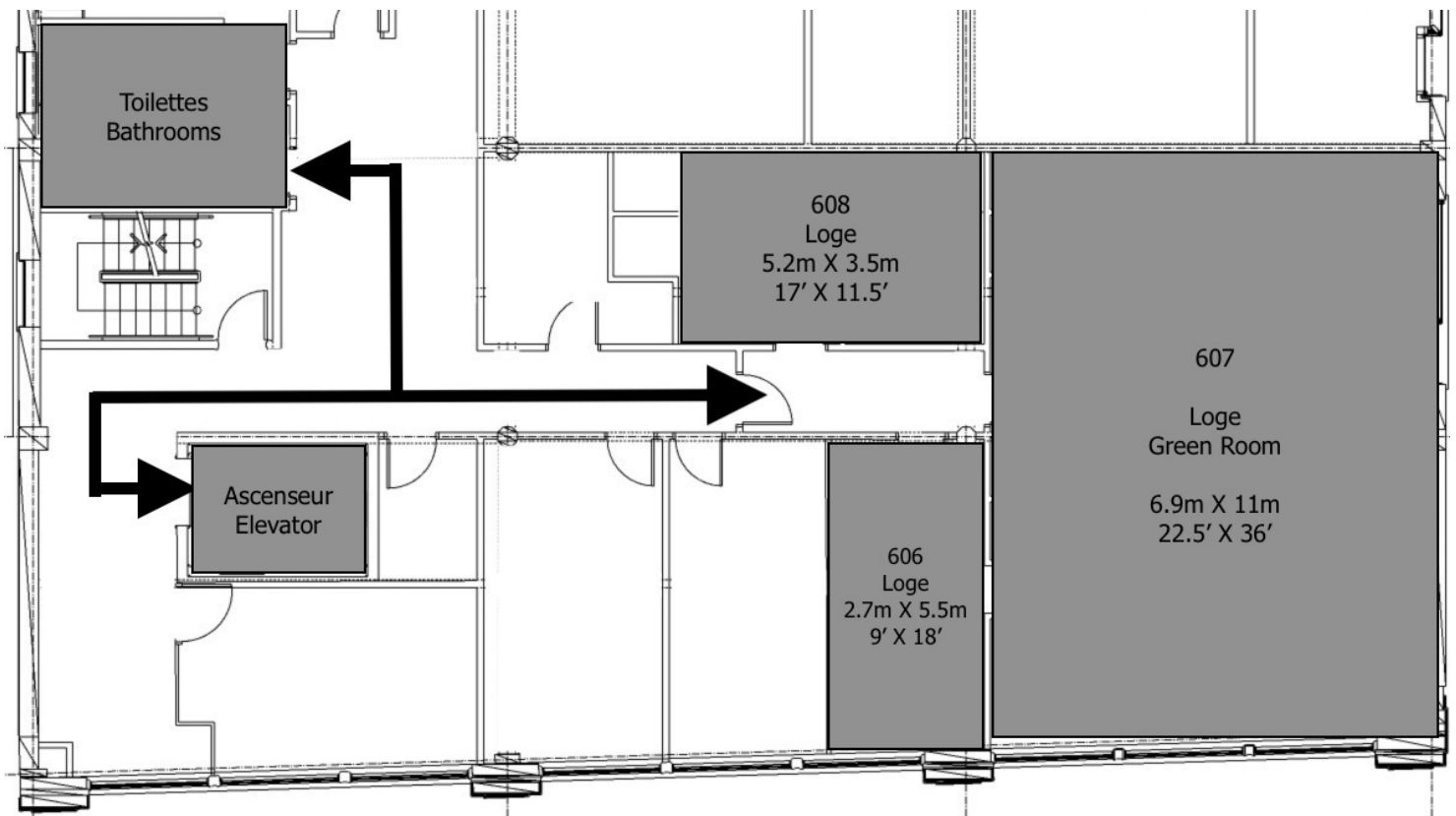
### Dressing room:

- 1 x 85 square feet room (7.9 M<sup>2</sup>)
- 1 x 43 square feet room (4 M<sup>2</sup>)
- 1 x Toilet with shower
- Also, only upon request if available:**
- 1 x dressing room (capacity of 40 people) and
- 2 x dressing room (capacity of 3) on the 6<sup>th</sup> floor

### Accessories:

- 1 x Flat Iron and board
- 1 x Jiffy steamer **upon request**

### Green Rooms on the 6th floor:



## LIGHTS

<b>Console:</b>	Grand MA2 on PC + Fader Wing ETC Ion2000 + FADW 2x10 (available) Optosplitter Pathway8875
<b>Dimmers:</b>	96 x 2.4Kw (Strand C21) 12 Floor circuits (6 S-Left , 6 S-Right)
<b>Projectors:</b>	12 x Leko ETC 575W 6 x Leko ETC 19 degrees lens barel 12 x Leko ETC 26 degrees lens barel 5 x Leko ETC 36 degrees lens barel 12 x PAR S4 ETC 2 x TMB Procan 20 (blinder) 2 x Martin Strobe CWL 16 x Chauvet Colorado 1 6 x Chauvet Rogue 1 spot (moving lights) 6 x Chauvet Rogue 2 wash (moving lights)
<b>FOH Projectors:</b>	12 x Leko ETC for F.O.H. 15-30 degrees 575w
<b>Cables :</b>	20 x TL3 "Y" 12 x TL3 (5' / 1.5M) 12 x TL3 (10' / 3 M) 15 x TL3 (25' / 7.6M) 15 x TL3 (50' / 15M) 6 x adaptors L5-20P to 5-15R (6' / 1.8M) 6 x adaptors 5-15P to L5-20R (6' / 1.8M) 3 x adaptors L5-20 to 2 duplex 5-15R
<b>Lighting accessories:</b>	2 x 8' (2.4M) Boom 2 x 4' (1.2M) Boom 4 x Altman Floor Bases (B-18) 6 x Maffer clamp Lee filters
<b>Fog machine:</b>	1x Fog generator MDG Atmosphere with remote



## SOUND

<b>Mixing Console:</b>	<b>Yamaha CL5 and/or DM7-Compact</b> Extra tech required for monitor world Rio Stage Box Dante, 48 ins , 24 outs
<b>PA:</b>	8 x L-Acoustics KIVA™ 2 x L-Acoustics KILO™ 4 x L-Acoustics™ 8XT - Front Fill 2 x L-Acoustics: 112p - Front Fill 1 x L-Acoustics SB118 (sub) 2 x L-Acoustics SB28 (sub) Amplifiers: L-Acoustics™ LA4/LA8 <u>Accessible only by staff of l'Astral</u> <u>Subs on L-R</u>
<b>Stage Monitor System:</b>	2 x L-Acoustics™ LA4X 8 x L-Acoustics: 12XT 1 x L-Acoustics : 112p ( For monitor world )
<b>Microphones :</b>	1 x Sennheiser E-901 2 x Sennheiser E-902 2 x Sennheiser E-905 2 x Sennheiser E-906 4 x Sennheiser E-908 2 x Sennheiser E-914 5 x Sennheiser E-935 4 x Sennheiser E-904 2 x Sennheiser 441 2 x Sennheiser 421 2 x Audio Technica ATM-35 2 x Neuman KM-184 MT (Paires) 5 x Shure SM-58 5 x Shure SM-57 1 x Shure Beta-52 1 x Shure Beta-91a 2 x Electro-Voice RE20 2 x AKG 414-xls 10 x DI passives, Radial JDI 4 x DI actives, Radial J48 2 x Hum eliminator
<b>Accessories:</b>	10 x short, black telescopic mic stands 10 x tall, black telescopic mic stands 2 x "Atlas, black mic stands 5 x table mic stands 4 x AC transformers/power convertor 120/220V
<b>Audio Snakes:</b>	1 x 48 pairs (3 output) (2 Veam 48prs Fan Outs) 1 Snake (8 pairs XLR3) 50' (15M) 1 Snake (8 pairs XLR3) 25' (7.6M) 1 Snake (12 pairs XLR3) 25' (7.6M) 1 Snake (12 pairs XLR3) 50' (15M) 40 XLR 25' (7.6M) 10 XLR 50' (15M)
<b>Communication system:</b>	5 x Clearcoms™ (headset and belt pack)
<b>Hearing -Impaired system:</b>	1 x Decade™ LX-75S (104,9 Mhz)
<b>Media distribution:</b>	1 x WhirlWind Press Power 2

## Video Control Room

### Cameras:

- 2 x Panasonic AW-UE100
- 1 x Panasonic AW-RP60 Controller
- 1 x Sony PXW-FX9
- Lens for FX9 Sony FE PZ 28-135mm f/4 G OSS Lens
- 1 x Cam-Gear Mid Spreader Stand

LTC Generator	Horita TRG100
ISO Recorder 1 ch	Blackmagic Hyperdeck Extreme 8K HDR
ISO Recorder X 4	Blackmagic Hyperdeck Studio 4K Pro
Multidock Storage	Blackmagic Multidock 10G SSD
Video Matrix	Blackmagic Smart 6G 20X20
Remote Control Panel	Blackmagic Videohub Master Control Pro
Steaming Encoder	Haivision S-KB-SFF4-1
Monitoring Scope	Blackmagic Smartscope 6Duo 4K
PC for V-Mix Controleur	Processing pour 8 Caméras Skaarhoj Air Fly Pro
Monitoring Audio	Blackmagic audio monitor 12G
Audio card	MOTU M4
Speakers	JBL LSR 305
Allen & Heath	SQ-5 with Dante Card
Speakers Audio booth	Yamaha HS-7

Extra fees for use of these equipment

## ACCESSORIES

<b>Wood risers with aluminium frame:</b>	4 x Risers                    4' X 8' (1.22M X 2.44M) 2 x Risers                    4' X 4' (1.22M X 1.22M) 2 x Risers                    2' X 8' (0.6M X 1.22M)
	<b><u>If Available</u></b> <b><u>Extra handling fees applies</u></b>
	Legs:                            32 x 6" (0.15M) Legs:                            48 x 12" (0.3M) Legs:                            60 x 18" (0.45M) Legs:                            20 x 24" (0.6M) Legs:                            12 x 28" (0.76M) Legs:                            4 x 36" (0.9M) Legs:                            24 x 40" (1M)
	2 x stairs:                    30" (0.76M) 4 x wheels for risers Black skirts and various heights of legs
<b>Music stand:</b>	6 x adjustable music stand with lights
<b>Stools:</b>	4 x black stools
<b>Stepladders:</b>	16' and 12' (4.9M and 3.7M) height
<b>Safety equipment:</b>	10 x Helmets and 3x harnesses
<b>Hanging:</b>	2 x 50' black ropes (15M) and pulleys

## PIANO

Piano	 <b>YAMAHA PIANOS</b> <b>C7 Silent ( 7' 6" )</b>
Tuning :	<b><u>200\$ / each</u></b> Available UPON RESERVATION <b><u>ONLY</u></b> two (2) weeks prior to the event
Pickup system :	Helpinstill piano sensor model 120

## ADDITIONAL EQUIPEMENT- PRICING

<b>Video:</b>	1x video Projector Panasonic PT-REQ10BU 10000 lumens Includes: 1 x Motorized Screen 16/10, (192" x 120" / 4.9M x 3M) in front of the stage 1x USB Power Point controller	<b><u>75\$ /per day</u></b>
	1x Screen Da-Lite Fast Fold Demountable Screen 7,5' X 13,3' (2.3m X 4m):	<b><u>175\$ /per day</u></b>
	2x Flat screens LG LED 55" 4K (1.4M): Includes: 1 x Video selector/ mixer Roland V1-HD 1 x Distribution Amplificator, Kramer VP-400K	<b><u>150\$ each/per day</u></b>
<b>Lighting:</b>	8 x Colorblast (projecteurs LED):	<b><u>25\$ each/per day</u></b>
<b>Sound :</b>	4 x Wireless microphones Shure ULXD4Q :	<b><u>50\$ each/per day</u></b>



## ADDITIONAL EQUIPEMENT- PRICING

<b>Electronic Piano:</b>	1 x keyboard <b>YAMAHA CP1</b> with stand: Piano shell with seat available upon request	<b><u>100\$/per day</u></b>
<b>Drum set:</b>	1 x Drum <b>YAMAHA CLUB CUSTOM</b> (black) The set includes: <ul style="list-style-type: none"> <li>1 x Kick 20" et 18" + Pédal</li> <li>1 x Snare 14" x 5.5" + stand</li> <li>1 x Hi Hat 14" Sabian Artisan + stand</li> <li>1 x Tom 10"; 12" + tom holder</li> <li>1 x Floor on legs 14"; 16"</li> <li>1 x Crash 16" Zildjian thin crash + stand</li> <li>1 x Crash 17" Paiste Twenty Collection + stand</li> <li>1 x Crash 18" Paiste Twenty Collection + stand</li> <li>1 x Ride 21" Paiste Twenty Collection + stand</li> <li>1 x adjustable stool</li> <li>1 x tapis 8' X 8' (2.44M X 2.44M)</li> </ul>	<b><u>150\$/per day</u></b>
<b>Bass amp:</b>	1x <b>Eden Wt-800/ 1x 410 XT</b>	<b><u>60\$/per day</u></b>
<b>Guitar amplifier :</b>	1x <b>Fender De Ville 2x12</b>	<b><u>40\$/per day</u></b>
<b>Guitar amplifier :</b>	1x <b>Marshall JVM 205-C</b>	<b><u>40\$/per day</u></b>
<b>Various accessories:</b>	1 x roll of Camera tape: 1 x roll of electric tape 1 x Batteries 9V: 2 x Batteries AA, AAA:	<b><u>25\$ each</u></b> <b><u>2\$ each</u></b> <b><u>5\$ each</u></b> <b><u>5\$ each</u></b>

- **Tobacco products**

Please notice that since 2006 may 31<sup>st</sup> , it's **forbidden to smoke in all public areas, including bars, restaurant and all cultural establishments.**

Here is a quick resume of Quebec's provincial law.

Article 2

It is forbidden to smoke in cultural establishments.

Article 42

Anyone who does not respect article 2 will be given a fine reaching from 50\$ to 300 for a first offense and from 100\$ to 600\$ for a second offense. (Security personnel of the building as got the power to give these fines)

Article 43

The venue's administration can be fined from 400\$ to 4000\$ for a first offense and 1000\$ to 10 000\$ for a second offense if they are found guilty of not making sure the law was respected.

Article 57.1

Stipulates that any person, administration and by extension the promoter could be called before a judge if it is proven that anyone has intentionally permitted someone to bypass article 2 in any way.

Penalties could go up to seizure of all the revenues received from an activity during which the offense was perpetrated.

- **Safety equipments**

As per provincial law: **Everybody onstage** (workers and visitors), during a load in or a Load out, **must wear protection shoes** with steel toe and puncture resistant steel midsole (CSA, ANSI or CE approved).

- **Pyrotechnical effects**

Pyrotechnical effects on stage are prohibited.

## USEFUL INFORMATIONS

Montreal, the metropolis of the Province of Quebec, is the 3rd most important city in Canada with 1,800,000 residents spread over 500 km<sup>2</sup>.

The official languages are French and English. Many neighbourhoods have strong multicultural concentrations.

### Airports

PierreElliottTrudeau is the official name of the Montreal international airport, but it is usually referred to as Dorval, the name of the town where it is situated. The airport's international code is YUL. Dorval airport is about 20 km from the centre of Montreal, a 20minute drive by car outside rush hour.

### Finding your way in Montreal

it is easy to get around in Montreal. On foot, by car, taxi or public transport, attractions are accessible and easy to find. Montreal has an underground network of galleries, much appreciated in winter, giving access to boutiques, office towers, movie houses and entertainment areas. Montreal streets form a near perfect quadrangle, from North to South and East to West. SaintLaurent Boulevard divides the city between East and West, determining addresses. This is important when looking for an address, i.e. 260 boul. de Maisonneuve West is situated west of SaintLaurent, while 410 SainteCatherine East is east of SaintLaurent.

### Public Transport

The Metro: Montreal is served by 4 lines of the Metro running EastWest and NorthSouth. Place des Arts station is on the green line ANGRIGNON / HONORÉ-BEAUGRAND. To locate Metro stations look for this sign a on the outside of buildings.

Cash: \$3.50 -

Strip of ten tickets: \$30.00

Hours of service: Monday to Sunday, except Saturday: 5:30 a.m. to half past midnight, Saturday: 5:30 a.m. to 1:00 a.m.

### Taxis

Taxis in Montreal are numerous: Coop Taxi: 514.725.9885, Diamond Taxi: 514.273.6331,

### Car

Although it is relatively easy to drive in downtown Montreal, walking and public transport are a better option.

## EMERGENCIES (Police, Fire, Ambulance): 911

### Hospitals

CHUM Hospital –1000 SaintDenis - 514-890-8000

NotreDame Hospital –1560 Sherbrooke West - 514-413-8777

### Drugstores

Uniprix Complexe Desjardins – Open until 6 p.m., except for Thursdays and Fridays until 9 p.m. Pharmaprix – 901 SainteCatherine East (open until midnight), and 450 SainteCatherine West (open until 11 p.m.)

### Currency

The Canadian dollar has legal currency in all provinces.

Denominations: \$5, \$10, \$20, \$50 and \$100. Automated banking machines (called guichets automatiques) hand out 20 dollar bills only.

1 Canadian dollar = 100 cents, Coins: \$2, \$1, 25¢, 10¢, and 5¢.

### Electricity

As everywhere else in North America, electricity functions on 110 volts - 60 Hz . Europeans must use an adaptor and/or a transformer for their small electrical appliances.

### Groceries

Provigo – 3421, Park Avenue (Near L'AppartementHôtel)

IGA marchés Louise Ménard – Complexe Desjardins – A large grocery store offering hot meals at noon and precooked meals to take out.

### Dépanneurs (convenience stores)

in Quebec, there are many small businesses such as tobacco shops (cigarettes will not be sold to people under 18) and 'dépanneurs' where you can also find alcohol, telephone cards, chewinggum and even groceries. 'Dépanneurs' can be found on almost every street corner. They are usually open until 11 p.m.



**Alcohol**

Quebec has an important beer industry. In addition to wellknown breweries like Molson and Labatt, smaller brewers produce excellent beer (Boréale, Unibroue, Belle Gueule, Cheval blanc). French wine is very expensive in Québec. It is advisable to choose wine from Spain or Portugal, but mostly from Chile and Argentina.

Thursday and Friday: 10 to 9 p.m. Saturday: 10 to 5 p.m. Sunday: twelve to 5 p.m. Some outlets open until 11 p.m. every day and are called SAQ Express.

There is a SAQ store in Complexe Desjardins, and at 440 boul. de Maisonneuve West. Dépanneurs also sell beer and table wine. It is not possible to buy alcohol and bring it to a business place after 11 pm. Alcohol consumption is limited to people over 18.

**Banks and Foreign exchange**

Most banks will change foreign currency at a cost. Some foreign exchange counters do not take a commission. It is advisable to ask and compare. Automated banking machines (guichets automatiques) are accessible all week, 24 hours a day.

Caisse populaire Desjardins: Complexe Desjardins

Bank of Montreal: 630 ReneLevesque West

Royal Bank: 1 Place VilleMarie

National Bank: 200600 de la Gauchetière West

There are many foreign exchange offices on SainteCatherine Street, west of Place des Arts.

Major credit cards are accepted: Visa, MasterCard, American Express. Travellers' cheques are generally accepted in major hotels and restaurants.

**Taxes and tipping**

In boutiques and in restaurants, prices do not include tax unless otherwise indicated. There are two taxes. Federal (GST – 5%) and provincial (TVQ – 7,5%). Therefore one must add approximately 10% to 15% to the indicated price. Food bought in groceries (except for precooked meals) is not subject to tax. Books are subject to federal tax only (7%).

Tips are never added to the bill unless otherwise mentioned. Restaurants tend to include tips for groups of 10 people or more, but not without informing customers. As a rule, if you are satisfied with the service in a restaurant, you are expected to leave a 15% tip, calculated on the amount of the bill before taxes. Barmen, barmaids and taxi drivers expect a tip.

**Telephone**

The area code for Montreal are 514 and 438. You have to dial the area code for a local call. For a long distance, dial 1, the area code, followed by the 7digit number. Numbers beginning with 800, 866, 877, or 888 are tollfree bers. To reach an operator, dial 0 from any telephone.

# LIGHTING PLOT

